



FreshCheck Spray

CONFIRMING CLEANLINESS

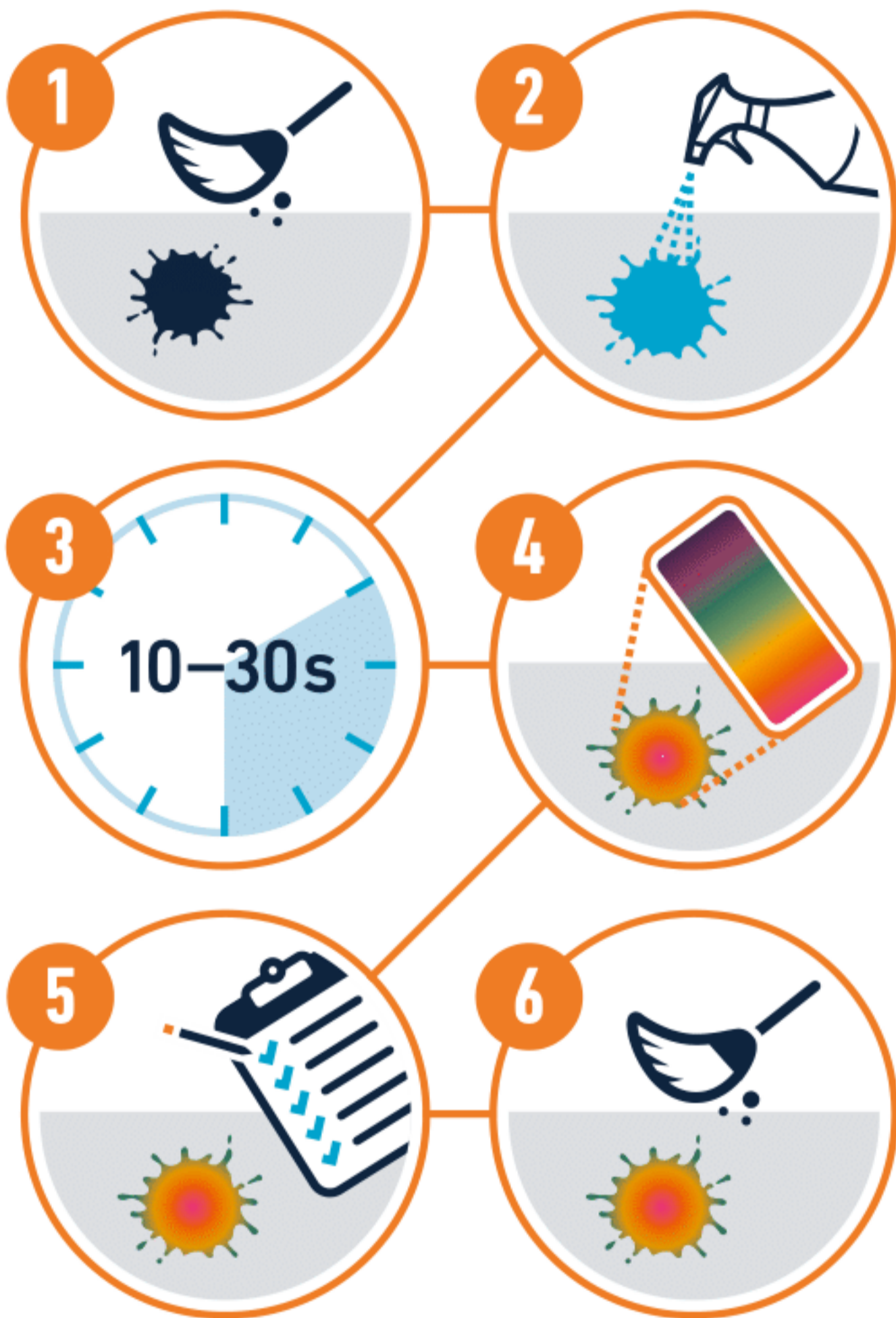


Nonfood compounds
(Category Code P1)

INDEPENDENTLY VERIFIED



INSTRUCTIONS SHAKE WELL BEFORE USE



1. **Ensure the surface is dry** and free of cleaning residues (if necessary, wipe with blue roll or dry cloth).
2. **Spray Fresh Check** onto the surface from a distance of 20cm.
3. **After 10 seconds**, observe the spray and note any colour changes:
 - ✓ If there is **no colour change**, the surface is clean.
 - ✓ If there is a **majority of purple**, then the surface is clean.
 - ✗ If there is a **predominant colour change** through most of the spray, the surface is unclean.
 - ✗ If there is a **complete colour change**, the surface is unclean.
4. **Record** any results taken.
5. **Document areas of risk** and if additional cleaning procedures are required.
6. **Rinse or wipe Fresh Check** from the surface with potable water (or a wipe).

THE BEST WAY TO USE FRESH CHECK

Fresh Check works best on flat surfaces that are steel or white as these are easiest to see colour change on. The spray is liquid so won't remain on unlevel surfaces making any colour change harder to judge. Finally, if you're not seeing a colour change it is likely your surfaces are clean, or, with an unexpected colour change, cleaning chemicals may not have been washed off correctly. Always re-clean if you see a colour change.

SAFETY INFORMATION

Fresh Check is for providing additional guidance regarding dangerous contaminants & the end user accepts liability for false positives and ensures that proper safety measures are taken regardless of test outcome. Do not consume Fresh Check. Do not use Fresh Check on electrical equipment. If Fresh Check gets in eye, rinse with copious water.

For additional safety information, please visit:
www.freshcheckuk.com